

# Deck Plan

# PERLA

## SHIP SPECIFICATIONS

Tonnage	16.710
Length	163,5 m
Breadth	22,79 m
Draught	6,85 m
Cruising Speed	16,5 knots
Passenger Decks	7
Elevator	4
Electric current	110/220V AC
Classification Society	DNV

## CABIN ACCOMMODATIONS

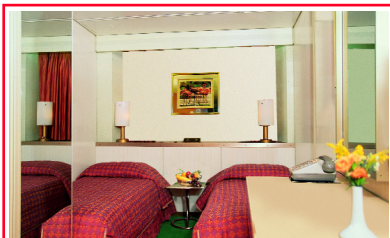
Total Outside Cabins	261
Total Inside Cabins	134
Total Cabins	395

## CREW

Crew Size	320
Nationality of Officers	Greek
Nationality of Crew	International

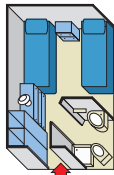
## CABIN AMENITIES

All cabins are equipped of shower, WC, washbasin, bathtub and minibar (suites only), air-condition with individual thermostat control, telephone, radio and safety box.



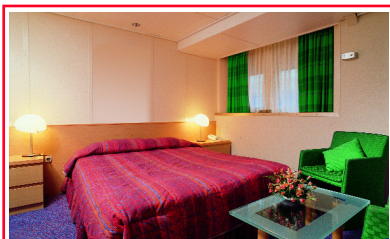
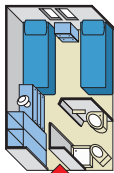
**E** aaaaaaaaa

- G**
- F**
- D**
- DA**



**B** aaaaaaaaa

- A**
- TB**
- TA**

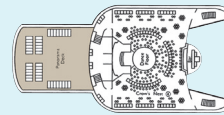
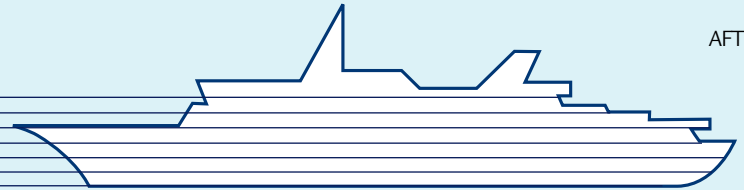


**SB** aaaaaaaaa

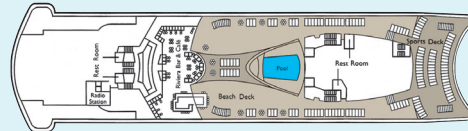
FORE

AFT

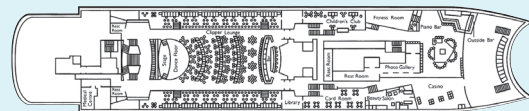
TROPICANA DECK  
BEACH DECK  
MAYFLOWER DECK  
BOAT DECK  
ATLANTIC DECK  
BISCAYNE DECK  
CARIBBEAN DECK



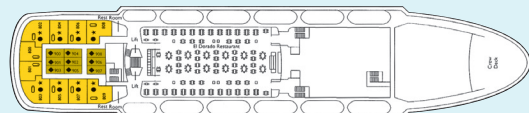
TROPICANA DECK



BEACH DECK



MAYFLOWER DECK



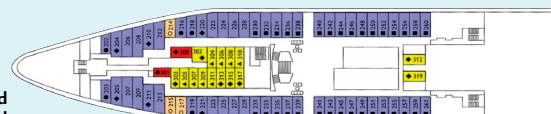
BOAT DECK



ATLANTIC DECK



BISCAYNE DECK



CARIBBEAN DECK

## Symbol Legend

- none = 2 lower beds
- = 1 single bed
- = double bed
- ★ = double bed + sofa
- ◆ = double bed + 1 upper bed
- ▲ = 2 lower beds + 1 upper bed
- = 2 lower beds + 2 upper beds
- = Cabin with bath

Deck plans and stateroom layouts are given purely as a guide. Size and layout may vary within the same category.

CAT.	DECK	DESCRIPTION	NUMBER OF STATEROOMS
<b>E</b>	Caribbean	Inside Standard Cabin, matrimonial, 3 <sup>rd</sup> berth with shower and WC	2
<b>G</b>	Caribbean	Inside Standard Cabin, 2 beds or matrimonial, 3 <sup>rd</sup> berth with shower and WC	15
<b>F</b>	Biscayne	Inside Standard Cabin, matrimonial, 3 <sup>rd</sup> berth with shower and WC	47
<b>D</b>	Atlantic/Boat	Inside Superior Cabin, 2 beds or matrimonial, 3 <sup>rd</sup> berth with shower and WC	54
<b>DA</b>	Biscayne	Inside Premium Cabin, 2 beds, 3 <sup>rd</sup> /4 <sup>th</sup> berth with shower and WC	16
<b>SO</b>	Caribbean/Biscayne/Atlantic	Single Outside Cabin with shower and WC	9
<b>B</b>	Caribbean	Outside Standard Cabin, 2 beds or matrimonial, 3 <sup>rd</sup> /4 <sup>th</sup> berth with shower and WC	57
<b>A</b>	Biscayne	Outside Superior Cabin, 2 beds or matrimonial, 3 <sup>rd</sup> /4 <sup>th</sup> berth with shower and WC	88
<b>TB</b>	Atlantic	Outside Premium Cabin, 2 beds or matrimonial, 3 <sup>rd</sup> berth with shower and WC	51
<b>TA</b>	Atlantic	Outside Premium Cabin, 2 beds or matrimonial, 3 <sup>rd</sup> berth with shower and WC	46
<b>SB</b>	Boat	Deluxe Outside Cabin, 2 beds or matrimonial, 1 sofa with bath and WC	10